

东芝半导体 (手机用) 简介

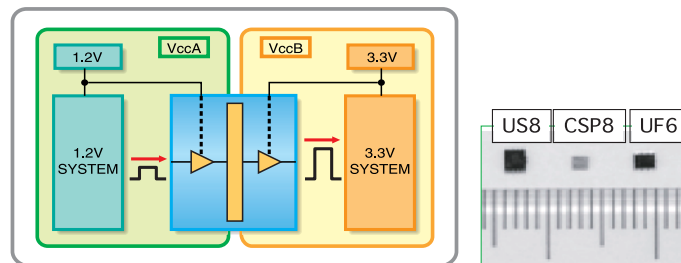
Toshiba General Purpose Semiconductors for Mobile Use

Transmission

Level Shifter

TC7WP3125 series (2bit)
TC7SP3125 series (1bit)

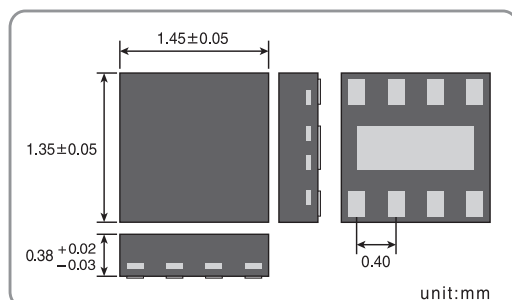
- Level Shift of 1.1V to 3.6V is possible.
- Low power consumption circuit is built in. (at the time of disable)
- Small Package : CST8/US8(WP3125), UF6(SP3125)



One Gate CMOS (L-MOS) series

TC7WHxxFC

- Small Package : CST8 (1.45x1.35x0.38mm)
- Inside low noise series



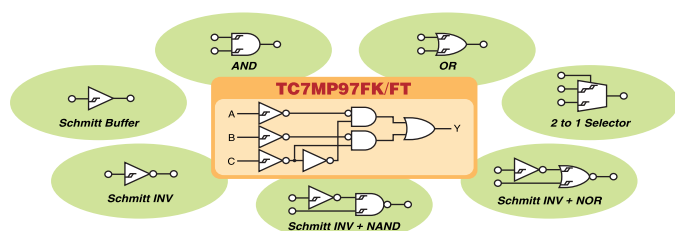
Control

Multi-function Gate Logic

TC7MP97FK/FT
TC7MP98FK/FT

This product can realize seven kinds of basic gate functions by one circuit

- Reduction of purchased parts (US14: 4.0x4.0x1.0mm)
- Flexible hard design
- TC7MP98FK/FT is counternon output signal type of TC7MP97FK/FT



Serial EEPROM

I²C Bus interface :TC9WMB series

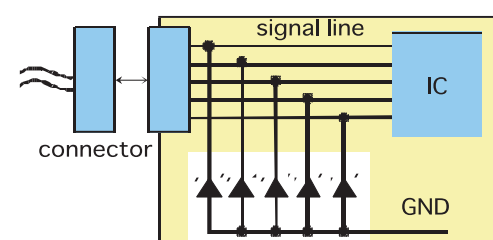
- SM8 package (corresponding to MSOP8)
- lineup to 1kbit, 2kbit, 4kbit
- Microwire interface :TC9WMC series
- small package US8 (3.1x2.0mm)
- lineup to 1kbit, 2kbit
- ("Microwire" is registered brand of National Semiconductor company)

ESD Protection diode

DF series

Suitable for protection of the signal line

- Standard type : for Audio, power supply
- High speed type : for SIM, interface
- Super high speed type : for USB1.1



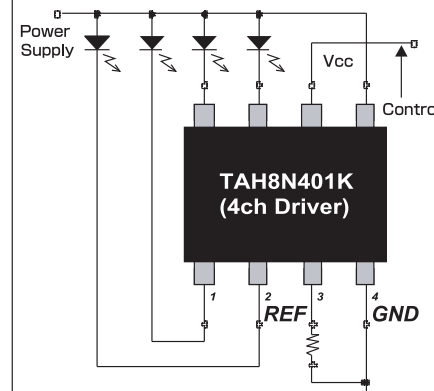
Interface/Driver

CC-Driver

TAH6N201U (2ch Driver)
TAH8N401K (4ch Driver)

Non up-convert type constant current driver

- Small mounted area
- High efficiency:90% (@Vcc=3.6V)



Interface/Driver

White LED Driver

TB62736/737FUG (Switching type)
TCA62735CFLG (Charge pump type)
TB62750FTG (Flash light application)

Built-in DC/DC converter and brightness control

- Switching type: High Accuracy
- Charge pump type: Low Noise
- Flash light application : High Current



Sensor

Illuminance Sensor

TPS85x series

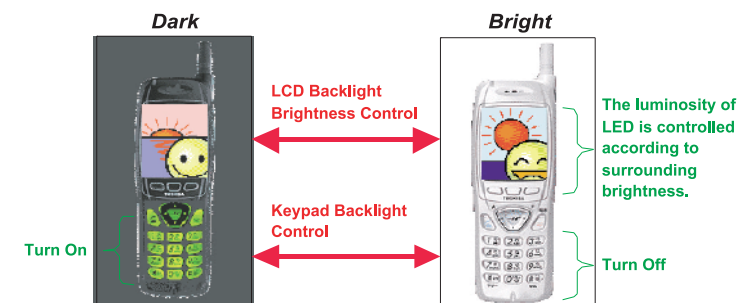
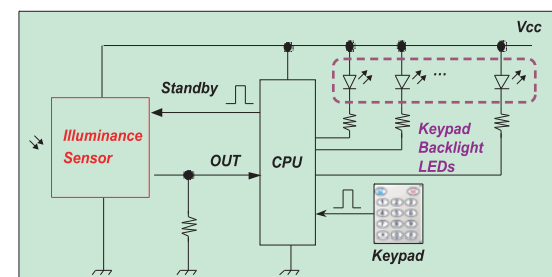
Suitable for automatic backlight control

- Application: color TFT monitor, key backlight
- consists of one chip integrated photo-diode
- TPS853 is include standby function (It can contribute more reduce energy consumption)



TOSHIBA Commodity Devices New Application Proposal for Cellular Phones

We propose the consumption power saving design of a cellular phone using the illuminance sensor.
Keypad backlight control (with Illuminance sensor)



Power Supply

Point Regulator

TAR5S series

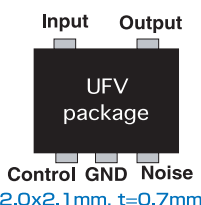
Small package Low Drop Out voltage regulator

- Output voltage line up: 1.5V to 5.0V (0.1V step)
- Add control switch function

Single type small & powerful

TAR5SxxU

- P_D=500mW (1inch² x 1.6mm² FR4 PCB Cu pad 645mm², t<500s)



Comparison of Battery Drive Time (For example)

